

PORTABLE EDGE BANDER

The Integration of World Lightest, Most Compact, Highest Performance Portable Edgebander

- > Custom alignment for use on straight or curved panels.
- > Automatically applying glue on the tape and amount of the glue applied could be easily adjusted.
- > Work for panel with beveled edges of 75 to 90 degrees.
- > Suitable for portable or stationary application.
- > Quick and easy use by a single operator.
- > Variable speed feed / Digital temperature control / Reheat quickly.
- > Minimum inner radius : 25 mm (1 inch)



BR 300 >
PORTABLE EDGE BANDER



> Tape thickness could be easily adjusted to operate edging from 0.4 – 3 mm.



> Easy entrance feeding guide allows quick tape width measurement.



> CORNER GUIDING PLATE allows precise corner edging with ease.



> Digital display & Temperature control.

BR 500 >
PORTABLE EDGE BANDER



> The glue adjustment knob is situated on top avoid interference during operation.



> Perfect performance on glue application. Double adhesive is not necessary.



> Guiding plate width can be easily adjusted from scale of 10 – 65mm and can be tilted within 15 degree for bevel edge banding.



> Easy handle speed adjustment enhance operation efficiency.

WIRELESS



DR 500 >
PORTABLE EDGE BANDER

SPECIFICATION

CRUISER CASE



MOBILE TOTE CASE

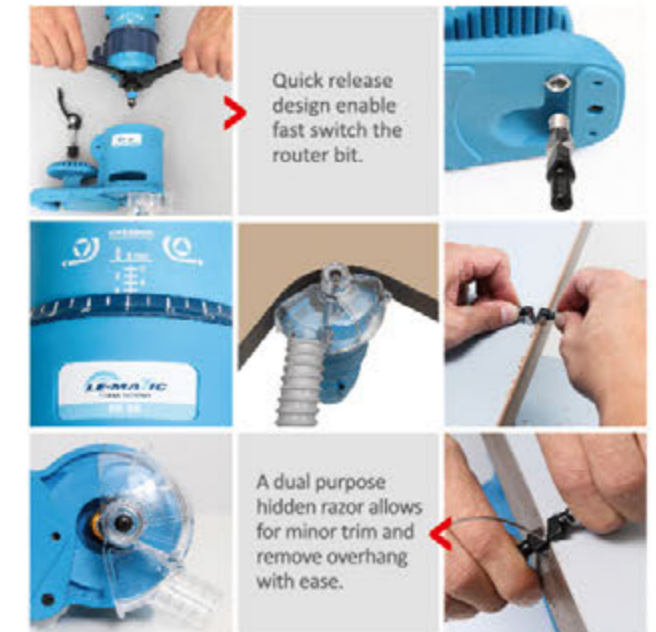


- EDGEBAND TRIMMER
- VACUUM CLAMP SET
- PORTABLE EDGEBANDER

EDGEBAND TRIMMER

PD80

> Standard with router bit & Cruiser case



Quick release design enable fast switch the router bit.

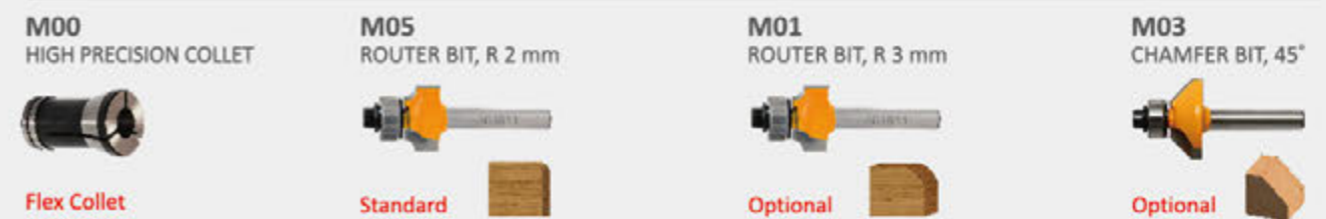
A dual purpose hidden razor allows for minor trim and remove overhang with ease.

- Output Power 450 W, 1 Phase, 100-120V or 220-240V
- No-Load Speed 30,000 rpm
- Net Weight 2.3 kg
- Gross Weight 4.3 kg
- Packing Sizes 350 x 250 x 180 mm

- > PVC, wooded band edge trimming.
- > Unique design for micro-adjust scale with 0.05 mm (0.002").
- > Superior dust collection telescopic vacuum cover.
- > Minimum inner radius : 25 mm (1").

| Model | BR 300 | BR 500 | DR 500 |
|--|--|---|---|
| Gross weight - Mobile Tote Case (Cruiser Case) | 11.0 kg (19.6 kg) | 11.1 kg (19.7 kg) | 12.0 kg (18.0 kg) |
| Net weight | 8.7 kg | 8.8 kg | 9.8 kg |
| Machine Size | | 340 x 300 x 350 mm | |
| Output Power with Motor | | 855 W | |
| Glue pot capacity | | 400 ml | |
| Warm-up Time | | 4 mins (120°C/250°F) | |
| Working temperature | 120°C-200°C (250°F-390°F) | MODE 1: 120°C -200°C (250°F -390°F) MODE 2: 80°C -155°C (175°F -310°F) | MODE 1: 120°C -200°C (250°F -390°F) MODE 2: 80°C -155°C (175°F -310°F) |
| Feeding Speed | 4.0 M/min.(13Ft/min) | 2 - 6 M/min.(6.5-20 Ft/min) | 4.0 M/min.(13Ft/min) |
| Tape Thickness | | 0.4 - 3 mm | |
| Tape Width | | 10 - 65 mm | |
| Wireless banding | - | - | o |
| Temp. Control | o | o | o |
| Digital display & Control | - | o | o |
| Speed Control | - | o | o |
| Packing Size - Mobile Tote Case (Cruiser Case) | 350 x 300 x 380 mm / 576 units (20' Container) | 460 x 410 x 530 mm / 280 units (20' Container) | |

Metric System Ø6 mm (other than USA)



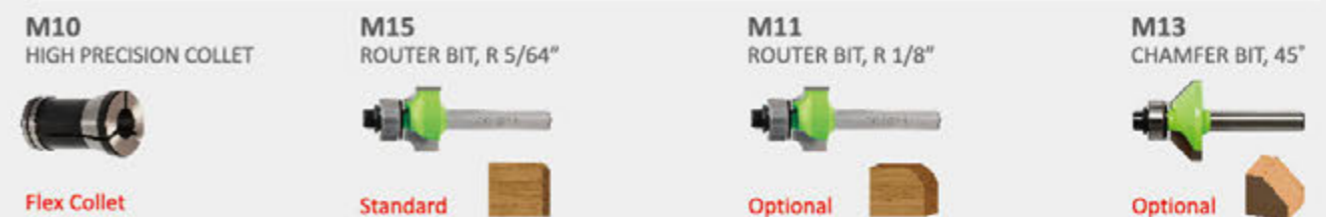
Flex Collet

Standard

Optional

Optional

Imperial System Ø1/4" (for USA)



Flex Collet

Standard

Optional

Optional

ACCESSORIES

MOBILE DISPENSER >

BC25

- > Prevent possible damage to hanging long edging.
- > Easy clip on design and could hold up edge band from height 10-62mm, thickness 0.4 – 3.0mm.



STATIONARY WORKTABLE >

ST95

- > Edgebanders and edgeband trimmers installed onto the stationary worktable ensure accurate application on small, thin, or curved workpieces not suitable for use with vacuum clamp.
- > An embedded outlet and magnetic switch provides a convenient on/off functionality on the edgebander or edgeband trimmer during operation.



ELECTRIC CLAMPING KIT >

VP03 (Standard with cruiser case)

- > Powerful vacuum pump suitable for different services.
- > Power outage prevention design.
- > Horizontal and vertical clamping -30°~ 90°.



VACUUM CLAMP SET >

VH03N (Standard with Cruiser Case)

- > The clamps will instantly detach when pressure released from the handle.



VACUUM HANDLES >

VH11 (Optional)



TRIMMER ADAPTOR PLATE >

ST15 (Optional)



- > Easy installation onto edgebander and edgeband trimmer cruiser case.
- > Ensures fast and secure tightening and a strong grip of large panels for edge banding, avoiding scratches and damages on the panel surface.
- > When the working table can not be attached via vacuum clamp, a vacuum kit can be secured to the edge of the working table using c-clamps or screws.

TAPE DISPENSER >

BC99



- > The dispenser wheel positioning of the edge band roll can be adjusted.

DUAL END CUTTER >

TK65



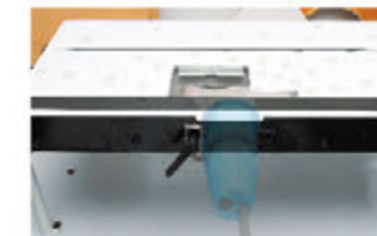
- > A unique two-point support design ensures perfectly connected and aligned cuts.
- > Ergonomic design handle bar.
- > Adjustable cutting line compensation design ensures precise end-to-end cuts.
- > The frame maybe opened to measure perpendicular and uniform end cuts.

GUIDE COMPONENT KIT >

ST97



- > Assists with keeping workpiece on level plane while straightline edgebanding or trimming.



- > Floating adjustment device to enhance more precise straightline trimming.

DOUBLE-SIDED TRIMMING KIT >

ST88



- > Suitable for width from 10 – 65mm edging.
- > Straight-line floating suspension design provides precise trimming result.